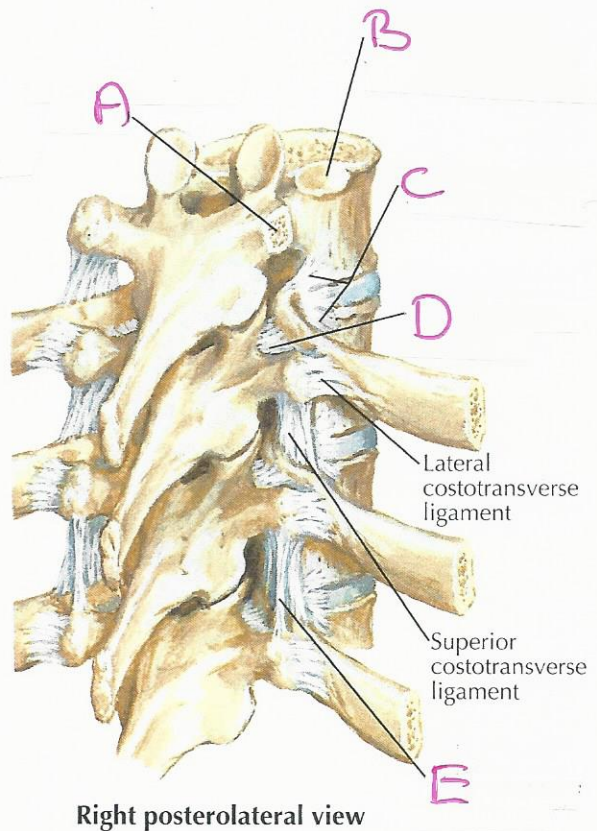
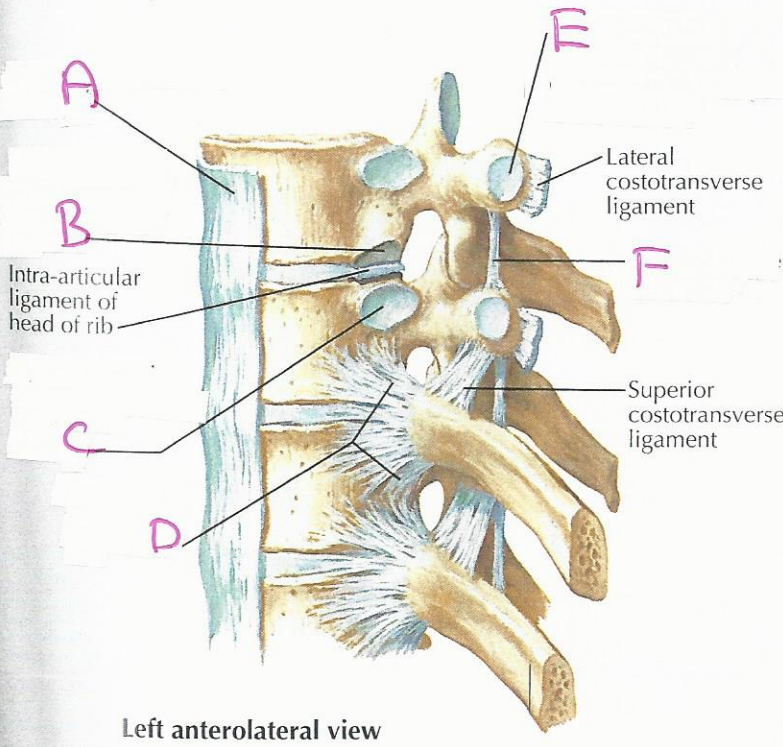


Note: The head of a typical rib articulates with the superior costal facet of the thoracic vertebra of the same number (by its inferior articular facet), the inferior costal facet of the vertebra above (by its superior articular facet), and the intervertebral disc between the two vertebrae. The costal tubercle articulates with the transverse process of the vertebra of the same number.



F. Netter M.D.